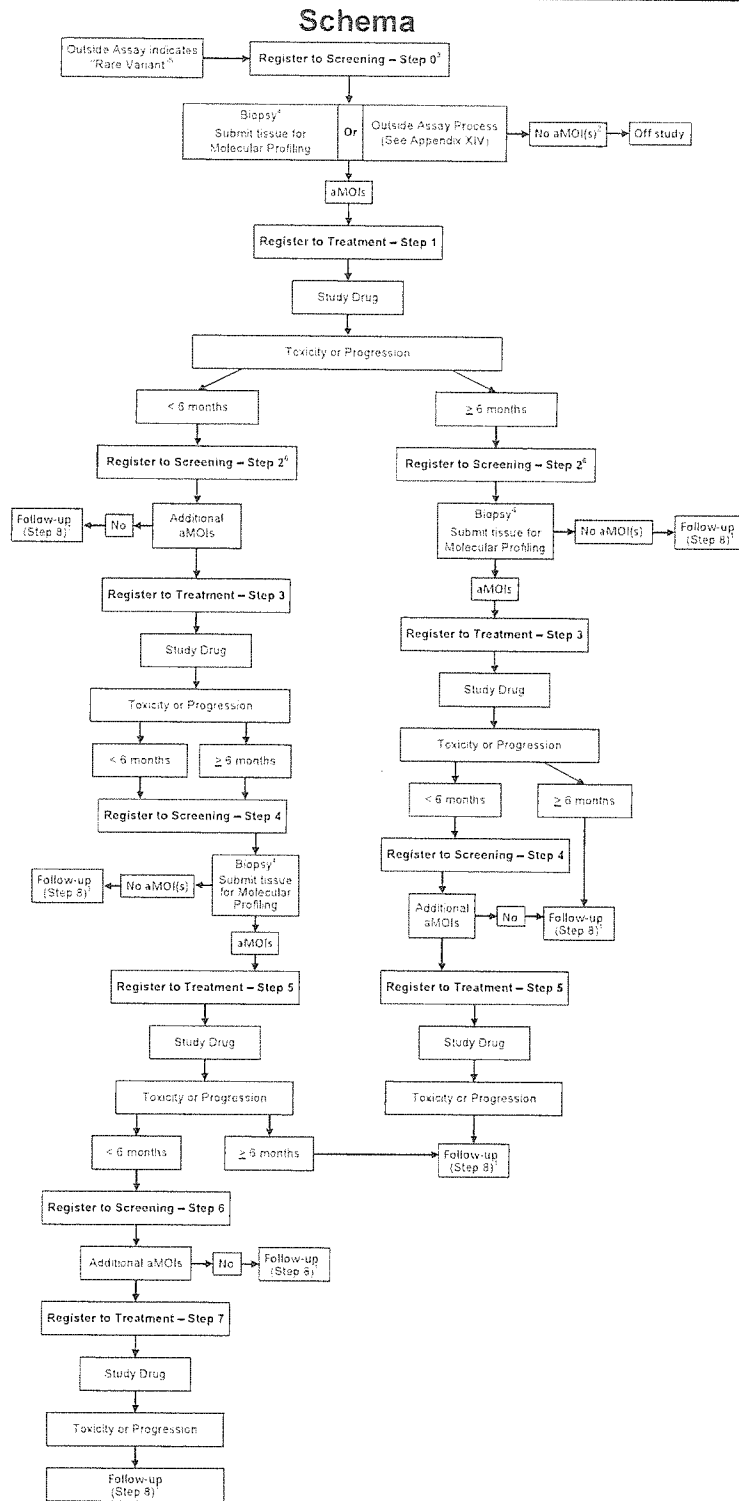


Rev.5/16
Rev.2/16
Rev. 12/16
Rev. 5/17
Rev. Add13



1. For patients that have consented to undergo the research biopsy and additional optional blood collections, register to Step 0 (see Section 3.9).
 2. Patients may be eligible to be reconsidered for treatment. Please see Section 3.2.2 and Section 5.1.
 3. Image Submission Requirements: see Section 11 for submission instructions.
 4. For multiple myeloma patients (excluding plasmacytoma), a bone marrow aspirate is required.
 5. Outside assay sequencing results from designated laboratory indicate an applicable 'rare variant' aMOI and the ordering physician received a specific notification of potential eligibility from the designated lab (see Appendix XIV). Tissue is to be submitted for central confirmation testing per Section 3.3.2.2.
 6. Patients assigned to Step 1 using a rare variant determined by an 'Outside Assay' go to follow-up and are not eligible for registration to Step 2. Patients are eligible for Step 3.